



Bumitama Agri Ltd

10 Anson Road #11-19

International Plaza, Singapore 079903

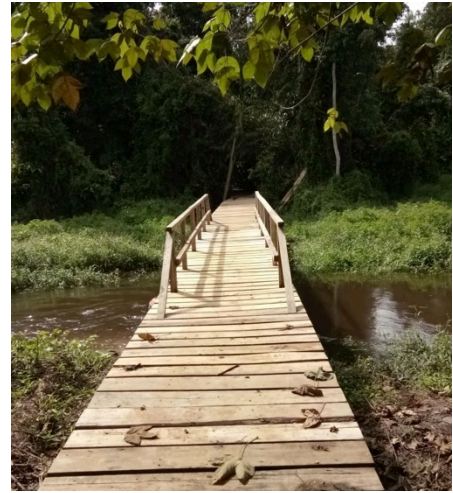
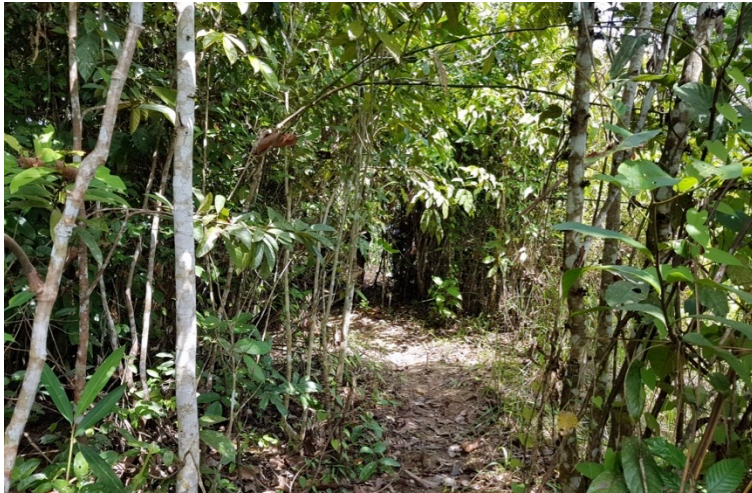
Tel : +65 6222 1332

Fax : +65 6222 1336

NEWS RELEASE

* BBCP UPDATES – CONSERVATION AND BIODIVERSITY *

OPENING A PATH TO A MORE SUSTAINABLE FUTURE – JUNGLE TRACK

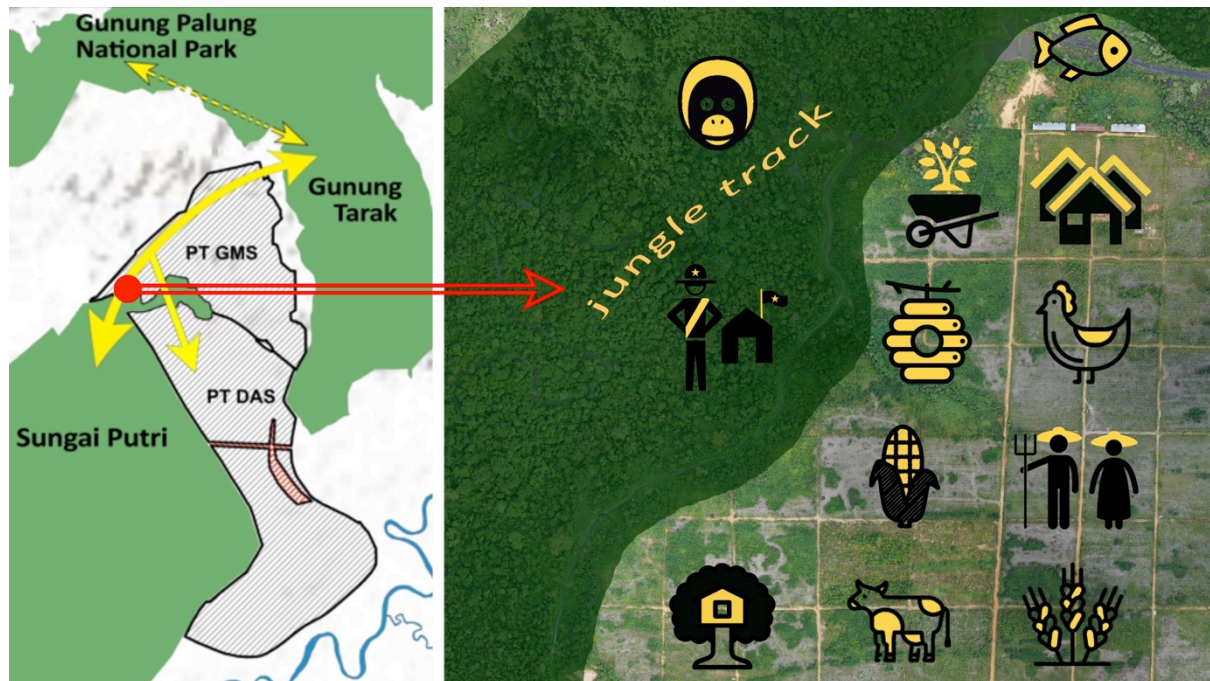


Jakarta, 7 February 2018 – Maintaining and enhancing the biodiversity of the areas set aside for conservation is part of the Bumitama Biodiversity and Community Project (“BBCP”). We have therefore built small jungle tracks that run through the wildlife migration corridor that connects the Sungai Putri peat forest and the protected forest of Gunung Tarak. The tracks will serve many purposes; they will be used by the patrolling team to monitor the area for potential fires or any illegal logging and hunting, conduct routine vegetation and wildlife inventorisations surveys, but also for training or future research and eco-tourism activities.



“I hear and I forget, I see and I remember, I do and I understand” – Confucius

The jungle tracks also provide access for our team to collect seeds and seedlings of indigenous plants and trees. These are then inventoried according to their species and cultivated in the nursery before planting in the designated set aside areas of the corridor.



The tracks are located inside of our concession PT GMS. Its entry point is positioned in the area dedicated for nursery of indigenous plants and integrated community farming, and on its path it crosses rivers where seven bridges were built using recycled materials by our own patrolling team.



The nursery currently holds around 5,000 seeds and seedlings, with plans to expand to 50,000 in the upcoming months. It is managed by our five-member team, who also handle the day to day operation such as construction of project infrastructure, patrolling, fire

monitoring, collection of seeds and seedlings, flora and fauna inventorisatation and reforestation in the designated areas. They all come from the local communities and as former loggers have excellent knowledge of the local forests. We are hopeful that they will act as role models and educate the local people on the potentials of NTFP and importance of conservation of natural resources.

About BBCP

The Bumitama Biodiversity and Community Project is a landscape-based collaborative programme jointly funded by Bumitama and IDH – Sustainable Trade Initiative that focuses on environmental and socio-economic activities for increased protection of set-aside areas inside and around Bumitama’s plantations in Ketapang district, West Kalimantan. While originally established to preserve the unique biodiversity of a wildlife migration corridor in PT GMS, this project was expanded by the areas of High Conservation Values, peat and High Carbon Stock forest of the recently acquired PT DAS adjacent to it, forming connectivity between the forests of Gunung Tarak and Sungai Putri. Besides the management and reforestation of the set-aside areas the project will involve 8 villages through production-protection-agreements where village level land use plans will link sustainable economic development with the project’s conservation effort. Our other partners in this project are Aidenvironment (“AE”) and Yayasan International Animal Rescue Indonesia (“YIARI”).

For further information, please email:

Christina Lim

Email: clim@bumitama-agri.com

Lim Sian Choo

Email: lim.sian.choo@bumitama-agri.com

Glenn Ho

Email: glenn.ho@bumitama-agri.com
