
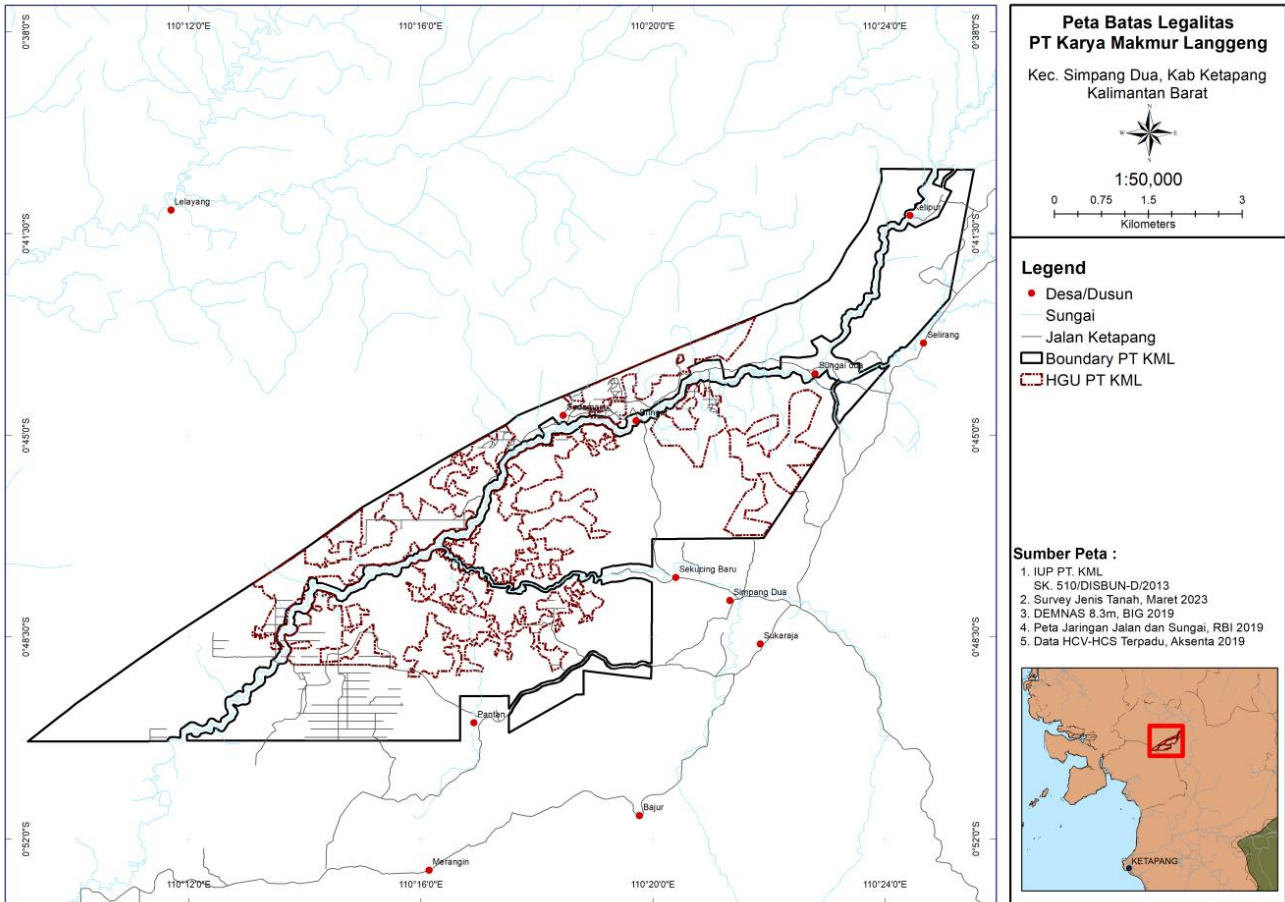


New Planting Procedure – Notification Statement

 RSPO Roundtable on Sustainable Palm Oil	 Bunitama Agri Ltd.	 TÜVRheinland [®] Precisely Right.
NPP Reference Number	RSPO New Planting Procedure (NPP) 2021	
Country of the NPP Submission:	Indonesia	
RSPO Membership Number	1-0043-07-000-00	
Name of Subsidiary (if any):	PT Karya Makmur Langgeng	
Name of Management Unit:	PT Karya Makmur Langgeng	
Name(s) of Estate(s) covered under this management plan:	PT Karya Makmur Langgeng	
Location of NPP area:	Ketapang District, West Kalimantan Province, Indonesia	
Address of NPP area:	Simpang Dua and Simpang Hulu Sub-district, Ketapang District, West Kalimantan Province, Indonesia	
Business/operation Permit Reference Number and Issuing Authority:	Head Decree of Ketapang District No.510/DISBUN-D/2013 dated 16 October 2013 about granted of plantation business permit for PT Karya Makmur Langgeng	
Size information (ha)	a) Total area as per permit:	± 16,700 ha Note: There's develop area for 4,847.34 ha. This area including the planted area, community oil palm, and infrastructure
	b) Area for new planting:	9,090.25
	c) HCV area (if any):	2,771.36
	d) HCS forest (if any):	Integrated with the HCV area
	e) Peatland (if any):	693.2 *included in the HCV-HCS area
	f) Steep terrain (if any):	88.22

	g) Riparian buffer (if any):	Included with the HCV-HCS area
	h) Marginal and fragile soil (if any):	-
Projected GHG emissions	(5,220.29) tonne CO ₂ e	
Geospatial Coordinates	0°40'17.85" - 0°50'20.21" S and 110°09'12.20" - 110°25'50.59" E	

Boundary Maps



Areas and proposed time for new planting

Location	Proposed Time Plan for Development		Approx. size of clearing (ha)
	Month	Year	
Simpang Dua and Simpang Hulu Sub-district, Ketapang District,	-	2024	4,107.99
	-	2025	3,207.12

West Kalimantan Province, Indonesia	-	2026	1,775.14
-------------------------------------	---	------	----------

Note: Please add rows if there are more locations planned. This section is an indicative plan by RSPO members on the land clearing that will be conducted. This information is also useful for growers to monitor their own progress and to plan for their Time-bound Plan for certification.

Summary of the NPP Verification by CB

The NPP verification of Bumitama Agri Ltd (PT Karya Makmur Langgeng) conducted through document verification and onsite visit. TUV Rheinland auditor conducted preliminary document reviewed on 18 September 2023. This was followed up with onsite visit verification to the proposed area for new planting site at PT Karya Makmur Langgeng on 25 – 29 September 2023. The information on the proposed area for new planting has been communicated transparently to the surrounding community who might be affected the proposed new planting. At the time of field verification, clearing and preparation for proposed area for new planting has not commenced.

There is further verification to ensure the conditions through satellite imagery on September 23, 2023 (google earth tools) there is no activity found inside the concession area for proposed area.

Based on forest and water designated area map of West Kalimantan province issued by Ministry of Forestry No.SK.733/Menhut-II/2014 dated 2 September 2014 stated that all of PT Karya Makmur Langgeng concession area belongs to the Other Land Uses (APL). Based on Spatial Development Plan of Ketapang District 2015 - 2035, all of concession area of PT Karya Makmur Langgeng is Agriculture Area, not forest area.

PT Karya Makmur Langgeng is a subsidiary of Bumitama Agri Ltd, and become RSPO membership since October 7, 2007. All development areas are following to RSPO New Planting Procedure (NPP 2021).

PT Karya Makmur Langgeng located in Simpang Dua and Simpang Hulu Sub-district, Ketapang District, West Kalimantan Province, Indonesia is developing approximately ± 19,000 Ha of oil palm plantation based on:

1. Location permit No.293 year 2006 for palm oil plantation and palm oil mill development on behalf PT Karya Makmur Langgeng located in Simpang Dua and Simpang Hulu Sub-district, Ketapang District, West Kalimantan Province, Indonesia. The total location permit of PT Karya Makmur Langgeng is ± 19,000 Ha. Issued on 13 October 2006 in Ketapang. This license valid for 3 years since issued on 13 October 2006.
2. Location permit No.24 year 2010 for palm oil plantation and palm oil mill development on behalf PT Karya Makmur Langgeng located in Simpang Dua and Simpang Hulu Sub-district, Ketapang District, West Kalimantan Province, Indonesia. The total location permit of PT Karya Makmur Langgeng is ± 19,000 Ha. Issued on 13 January 2010 in Ketapang. This license valid for 1 years since issued on 13 January 2010.
3. Decree Head of Ketapang District, No.510/DISBUN-D/2013 regarding plantation business license (IUP) of PT Karya Makmur Langgeng with total area about ± 16,700 Ha located in Simpang Dua and Simpang Hulu Sub-district, Ketapang District, West Kalimantan Province, Indonesia. Issued on 16 October 2013

The HCV-HCSA assessment conducted on 6 December 2019 until December 2020. This is consist of preliminary study carried out on 6 December 2019 to 15 December 2019 and field assessment on 10 to 24 February 2020. Total area include in HCV-HCSA assessment about ± 16,709.00 ha, located at Simpang Dua and Simpang Hulu Sub-district, Ketapang District, West Kalimantan Province, Indonesia. This HCV assessment conducted by external consultant PT Gagah Dinamiga Aksenta registered under the HCV Resource Network Assessor Licensing Scheme No. ALS18004FG on behalf Fersely Getsemani Feliggi. The HCV-HCSA assessment was peer reviewed by HCVRN approved reviewer in 29 November 2021 as an additional means quality assurance with status is "**Satisfactory**". For the complete review result, please follow the link <https://www.hcvnetwork.org/reports/hcv-hcsa-terpadu-pt-kml-kabupaten-ketapang-kalimantan-barat-indonesia>.

The EIA assessment conducted by CV. INTERGRAHA CITRA PERSADA, led by Mr. Yudi Andrian, ST. The EIA study was carried out after due consultation with the Province Level of National Environmental Body of Indonesia (BLH-Provinsi), and in accordance with Ministry's procedural guidelines, and Term of Reference (TOR) and scope of work. The EIA/AMDAL has approved by Komisi Penilai AMDAL of West Kalimantan Province based on Decree No. 201/BLHD/2013 concerning environmental permits for oil palm plantation and palm oil mill development by PT Karya Makmur Langgeng located in Simpang Dua and Simpang Hulu Sub-district, Ketapang District, West Kalimantan Province, Indonesia dated 14 March 2013.

The SIA assessment conducted on March 2022, carried out by Ecotrop Consulting. The method of SIA assessment was pre-assessment through the literature review, and onsite verification through carried out the social mapping and participatory mapping, onsite verification, Focused Group Discussion (FGD), analysis and record of onsite verification finding and analysis and social impact prediction. There are 3 (three) villages (Kampar Sebomban Village, Paoh Concong Village and Semandang Kanan Village) were included on this SIA assessment and the public consultation done to all the villages. Record of public

consultation served in the annex of the SIA assessment. An internal FGD with workers was held on 16 February 2022 and an FGD with local village stakeholders was held on 16 February 2022. The SIA assessment also includes the Sikam Sekayok smallholders scheme located in the villages of Kampar Sebomban and Semandang Kanan.

Community	Key Remarks/Concerns Raised
<p>Kampar Sebomban Village, Paoh Concong Village, Semandang Kanan Village</p>	<p>During field visit and interview with local community of Kampar Sebomban Village, Paoh Concong Village and Semandang Kanan Village it was found that, they are aware of BGA Group new project under PT Karya Makmur Langgeng (PT KML) activities regarding palm oil plantation projects. The company must resocialize the plan to develop oil palm plantations to the community owners and land users. Location and area of plantation development in accordance with the agreement. No land clearing without prior approval. The village government can help resolve land conflicts with the community (if any).</p> <p>Companies are not allowed to open <i>tembawang</i>, <i>kuburan kramat</i>, <i>sawah</i> and <i>perkampungan</i>. The company has carried out HCS, HCV and SIA assessments. The compensation price for land and plants refers to the price set by the Ketapang Regency Regional Government, but the actual price depends on needs and agreements. In the Paoh Concong Village area, PT KML's BGA has not yet entered, however, in the Kampar Sebomban and Semandang Kanan Villages areas, PT KML is already operating. GRTT is carried out transparently and without coercion. If you want GRTT, the land is measured, the documents are completed, the <i>kepala desa</i> is involved, the <i>dewan adat</i> and <i>kepala dusun</i> participate to legalize the land.</p> <p>The community members had given by PT KML their Free Prior and Informed Consent (FPIC) for the development of the project. Community aware of Palm Oil Plantation Projects run by PT KML impact such as land compensation, job and business opportunity, infrastructure improvements that are giving direct improvement to local community welfare. They know where to submit their complaints and grievances if any problem occurs during the palm oil plantation project operational process.</p> <p>All community's needs and wants regarding the palm oil projects have represented by local community customary and formal leaders. Community stated that the palm oil plantation planed by PT KML has given new hope for community for new economic access and resources opportunity, especially regarding schemed smallholder program. The company develops new partnerships (schemed smallholders), profit sharing or other partnerships, so that the community still owns the land and does not lose the land.</p> <p>PT KML with government agencies has conducted Plantation Plan socialization and the community representatives said that they attended the meeting. Every community member impacted by the plan invited, personally and/or representative of their family. The company representative stated that all of customary leaders invited agreed regarding plantation plan.</p> <p>Community members stated that the company never uses intimidating methods during acquisition process. No paramilitary and/or mercenaries used at any process. All of process is always participated by community members and appointed land acquisition team consist of village community members/leaders. Regarding any social and environmental assessment conducted by company, the community member said that they knew the process. They are also aware of environmental impact assessment process and stated that they were invited and attended the stakeholder meeting.</p> <p>The company has identified who owns the land. Identification was carried out together with landowners, community leaders and village officials. Legal land documents in the form of land certificate (<i>Surat Keterangan Tanah /SKT</i>) issued by the village government. There is no customary land or ulayat rights. Based on the results of interviews with village officials (Kampar Sebomban Village, Paoh Concong Village, Semandang Kanan Village), it was found that the location of the company land was land that has been controlled and managed by the community. Legal land documents in the form of certificate of rights (<i>Surat Keterangan Tanah /SKT</i>) were issued by the village government. Therefore, it is necessary to develop plantations through <i>Ganti Rugi Tanam Tumbuh/GRTT</i> using FPIC procedures.</p>

Based on explanation above, in general all community has been well informed regarding the Palm Oil plantation projects, including the positive and negative impacts that may occur. Most of community members showed their positive acceptance of upcoming program as part of palm oil plantation development in that area. The company stated their commitment into SIA Management Plan. The Company will contribute to increase positive impacts that could improve community welfare through the Management and Mitigation program such as infrastructure development, religion, socio-cultural support and education support. Then the important statement from the local communities is that they agree freely without coercion, and support PT KML's project to continue the development of palm oil plantation immediately, because they want to be recruited as workers and business partners in all level projects.

To fulfill the NPP requirement, company also conducted Land Use Change Analysis (LUC analysis) to ensure that there is no deforestation due to land development for palm oil. LUC analysis conducted on August 2013 by internal. The study consisted of a systematic land use changes analysis with the use of comparative satellite imagery, which shows the land use of the proposed area for the period 2005 – 2013. The LUCA was divided into several section i.e.: November 1, 2005 until November 31, 2007; December 1, 2007 until December 31, 2009; January 1, 2010 until May 9, 2014; May 9, 2014 until November 15, 2018 and November 15, 2018 until September 31, 2023.

The company conducted carbon stock assessment and GHG Emissions by PT Gagas Dinamiga Aksenta. The final report mentioned that total emission in PT Karya Langgeng Makmur is -5,220.29 tonne CO₂e following on RSPO GHG procedure.

The soil analysis was conducted by internal company. Soil survey report mentioned information regarding soil types, which are Dystrudepts, Endoaquepts, Haplofibrists, Paleudults, Plintudults, Quartzpsamments and Udifluvents .

The actual condition in the concession area of PT Karya Langgeng Makmur proposed for new planting is known that there is not yet land preparation conducted by company.

Based on Soil survey report, the soil types in PT Karya Langgeng Makmur concession area consist of:

Soil type	Total area (ha)	Total area (%)
Dystrudepts	8,972.82	54
Endoaquepts	2,860.00	17
Haplofibrists	753.90	5
Paleudults	945.35	6
Plintudults	196.80	1
Quartzpsamments	660.28	4
Udifluvents	2,319.81	14
Total	16,708.96	100

Note: soil survey assessment conducted coverage all location of PT Karya Langgeng Makmur

For GHG calculation, PT Karya Langgeng Makmur used the New delopment GHG calculator and the results are explained in the GHG emission report provided by internal. In page 36 mentioned "The prediction of PT Karya Langgeng Makmur GHG emission is calculated using New Development GHG Calculator – English from RSPO. The GHG results are explained in page 36 in the GHG emission report is:

Land Clearing Scenario	Emission (tCO ₂ e)						
	Land Clearing	Corp. Squest	Fertiliser	N2O	Fuel	Peat	Conservation
Alt 1	64,107.96	(74,920.42)	129.78	8,616.36	3,091.55	-	(6,245.52)
Alt 2	57,193.97	(77,566.39)	124.80	8,285.47	2,972.83	-	(7,118.24)
Alt 3	45,271.78	(56,685.74)	91.20	6,055.05	2,172.55	-	(13,000.97)

This GHG emission prediction from estate (plantation). All the GHG mitigation scenarios are already explained in GHG emission report.

The summary report and management contain Integrated Management plan of SEIA, HCV and GHG.

Conclusion

The TUV Rheinland Indonesia auditors were present with the management team of PT Karya Langgeng Makmur on that time to verify the findings of the desk study and held further discussions on the review and verification conducted. It is the opinion of the TUV Rheinland Indonesia auditors that the HCV-HCS, SEIA, GHG and LUCA assessment and integrated management plan at PT Karya Langgeng Makmur are comprehensive, professional and complied to RSPO principles, criteria and indicators.

Acknowledgement by RSPO Member	PT Karya Langgeng Makmur acknowledges that this NPP submission had been conducted in accordance with the New Planting Procedure 2021. All assessments had been carried out accordingly and without any prejudice. PT Karya Langgeng Makmur will ensure all legal requirements are continuously met pre, during and post development of this NPP area.
---------------------------------------	-------------------------------------------------------------------------------------------------------------------------------------------------------------------------------------------------------------------------------------------------------------------------------------------------------------------------------------------------------

Confirmation by Certification Body	The work recorded in this NPP submission by PT Karya Langgeng Makmur at Simpang Dua and Simpang Hulu Sub-district, Ketapang District, West Kalimantan Province, Indonesia has been verified by PT TUV Rheinland Indonesia and has been carried out in accordance with the requirement of the RSPO New Planting Procedure 2021 for the time being in force and in that respect that this area is considered satisfactory for development of new plantings.
-------------------------------------------	-----------------------------------------------------------------------------------------------------------------------------------------------------------------------------------------------------------------------------------------------------------------------------------------------------------------------------------------------------------------------------------------------------------------------------------------------------------

Signatures	RSPO Members	Certification Body
	Name of Person Responsible: Martin Mach	Name of Lead Auditor: Naik Monang Parlindungan Lingga
	Designation: Deputy Head of Environmental Protection & Governance	Designation: Lead Auditor
	Signature: 	Signature: 
	Date: 12 October 2023	Date: 12 October 2023